

PCM-3610

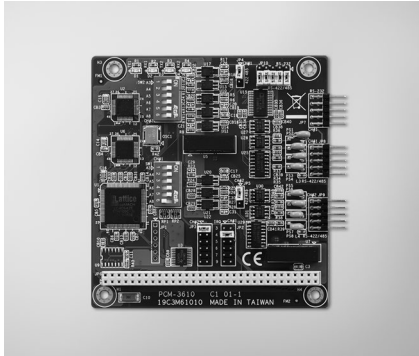
PCM-3612

PCM-3614

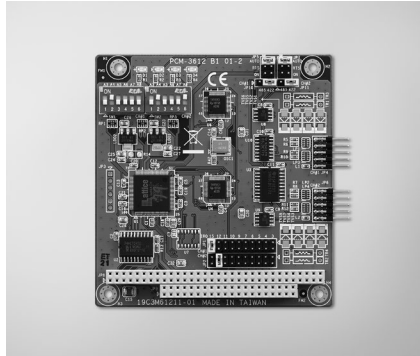
2-port RS-232/422/485 PC/104 Module with Isolation Protection

2-port RS-422/485 PC/104 Module

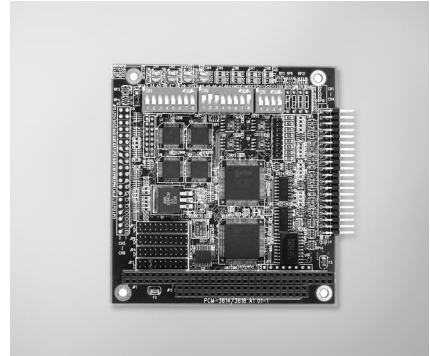
4-port RS-422/485 High-speed PC/104 Module



PCM-3610



PCM-3612



PCM-3614



Features

- High speed transmission rate
- Automatic RS-485 data flow control
- Jumper selectable interrupt level
- Supports Windows 2000/XP/Vista/7
- Supports WinCE 4.2, 5.0
- Powerful and easy-to-use utility (ICOM Tools)

Specifications

General

- Card Interface** PC/104
- Certification** CE, FCC
- Connectors** 2 x DB9-M
- Ports** 2
- Power Consumption** +5V @ 400mA (Typical)

Communications

- Channel 1** RS-232, 422, or 485
- Channel 2** RS-422, or RS-485
- Character Length** 5, 6, 7, or 8 bits
- IRQ** 3, 4, 5, 6, 7, 9
- Parity** Even, Odd, or None
- Speed** 50 bps ~ 115.2 kbps
- Stop Bit** 1, 1.5, or 2

Protection

- Isolation Protection** 2,500 V_{DC}

Environment

- Operating Humidity** 0 ~ 90 % RH
- Operating Temperature** -40 ~ 85°C (-40 ~ 185°F)
- Storage Temperature** -40 ~ 85°C (-40 ~ 185°F)

Ordering Information

- PCM-3610** Isolated RS-232/422/485 Module

Features

- Long distance communication
- Automatic RS-485 data flow control
- Jumper selectable interrupt level
- Supports Windows 2000/XP/Vista/7
- Supports WinCE 4.2, 5.0
- Powerful and easy-to-use utility (ICOM Tools)

Specifications

General

- Card Interface** PC/104
- Certification** CE, FCC
- Connectors** 2 x DB9-M
- Indicators** Red LED for TX
Green LED for RX
- Ports** 2
- Power Consumption** +5V @ 400mA (Typical)

Communications

- Channel 1 and 2** RS-422, or RS-485
- Character Length** 5,6,7, or 8 bits
- IRQ** 3, 4, 5, 6, 7, 9, 10, 11, 12 or 15
- Parity** Even, Odd, or None
- Speed** 50 bps ~ 115.2 kbps
- Stop Bit** 1, 1.5, or 2

Environment

- Operating Humidity** 0 ~ 90 % RH
- Operating Temperature** -40 ~ 85°C (-40 ~ 185°F)
- Storage Temperature** -40 ~ 85°C (-40 ~ 185°F)

Ordering Information

- PCM-3612** Dual Port RS-422/485 Module

Features

- Automatic RS-485 data flow control
- Shared IRQ settings for each ports
- LED indicators: TX, RX
- Standard PC ports: COM1, COM2, COM3, COM4 compatible
- Supports Windows 2000/XP/Vista/7
- Supports WinCE 4.2, 5.0
- Powerful and easy-to-use utility (ICOM Tools)

Specifications

General

- Card Interface** PC/104
- Certification** CE, FCC
- Connectors** 4 x DB9-M
- Ports** 4
- Power Consumption** +5V @ 450mA (Typical)

Communications

- Data Bits** 5, 6, 7, 8
- I/O Address Range** 0 x 000 ~ 0 x 3F8
- IRQ** 3, 4, 5, 6, 7, 9, 10, 11, 12, or 15
- Parity** Even, Odd, or None
- Data Signals** RS-422: TxD+, TxD-, RxD+, RxD-, CTS+, CTS-, RTS+, and RTS-
RS-485: DATA+, DATA-
50 bps ~ 921.6 kbps
- Speed**
- Stop Bits** 1, 1.5, 2
- Termination Resistor** 120 Ω

Environment

- Operating Humidity** 0 ~ 90 % RH
- Operating Temperature** 0~65°C (32~149°C)
- Storage Temperature** -40 ~ 85°C (-40 ~ 185°F)

Ordering Information

- PCM-3614** 4-port RS-422/485 High-speed Module