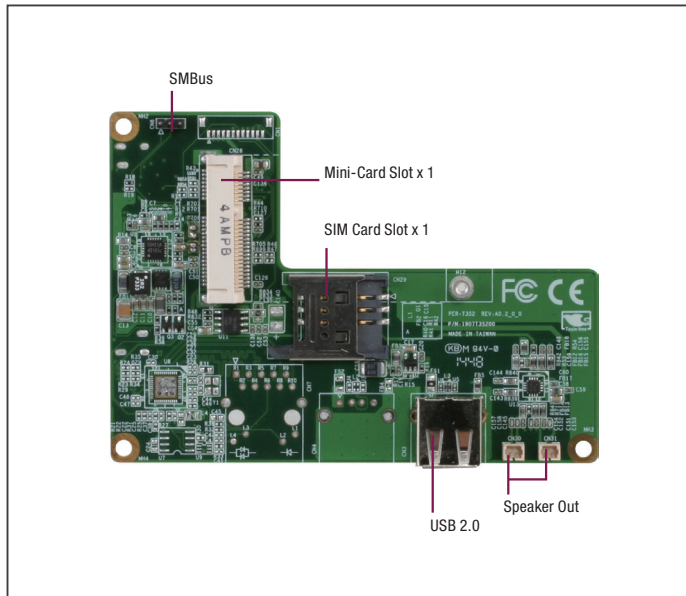


2.5" BIO Daughter Board with Mini-Card, SIM and USB



Features

- Mini-Card (Full Size) x 1, SIM slot x 1
- USB 2.0 x 1
- Speaker Out with 2W Amp
- SMBus x 1, GPIO x 1
- LPC (Optional)



Specifications

System	
Form Factor	2.5" Board
BIO	80-Pin high speed board to board connector
Power Requirement	Power Supplied from MB via board to board connector
Dimension	3.94" x 2.84" (100mm x 72mm)
Gross Weight	0.44 lb (0.2 kg)
Operating Temperature	32°F ~ 140°F (0°C ~ 60°C)
Storage Temperature	-40 °F ~ 176°F (-40°C ~ 80°C)
Operating Humidity	0% ~ 90% relative humidity, non-condensing
Certification	—
I/O	
Ethernet	—
USB	USB 2.0 x 1 on rear I/O
Audio	Speaker Out with 2W Amp
Expansion Interface	SMBus x 1
PCIe	Mini-Card x 1
Serial Port	—
SIM	SIM Slot x 1
DIO	—

Packing List

- Accessory kits
- BIO-ST01-M1U1

Optional Accessories

P/N	USB	Expansion Slot	Power Temp.
BIO-ST01-M1U1-A11-0001	USB 2.0 x 1	Mini-Card x 1, SIM x 1, Speaker Out with 2W Amp. x 1, SMBus	0°C ~ 60°C

Dimension

Unit: mm

