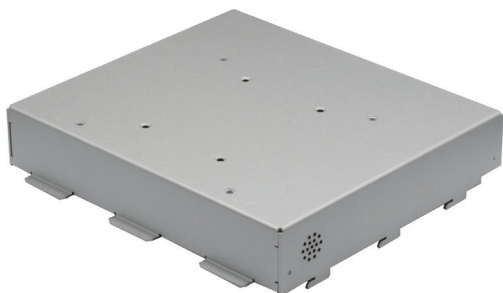
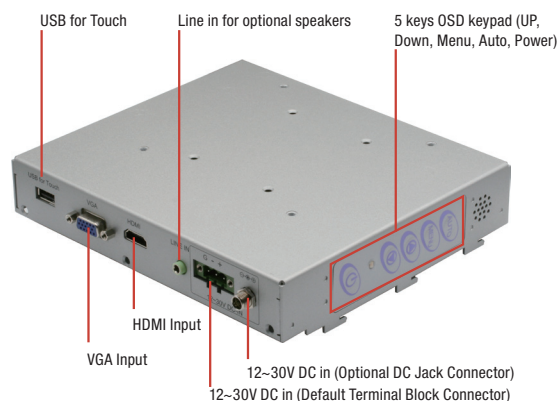


Display BOX Kit, DC 12~30V



Features

- **Compatible with OMNI Series Modules- Panels: to Build Your Own OMNI Display**
- **No any Firmware Changes Needed to Combine with 7 Sizes OMNI Panel Modules**
- **DC 12~30V with Over Voltage/Current, Under Voltage Protection**
- **Optional Built-in Speakers**

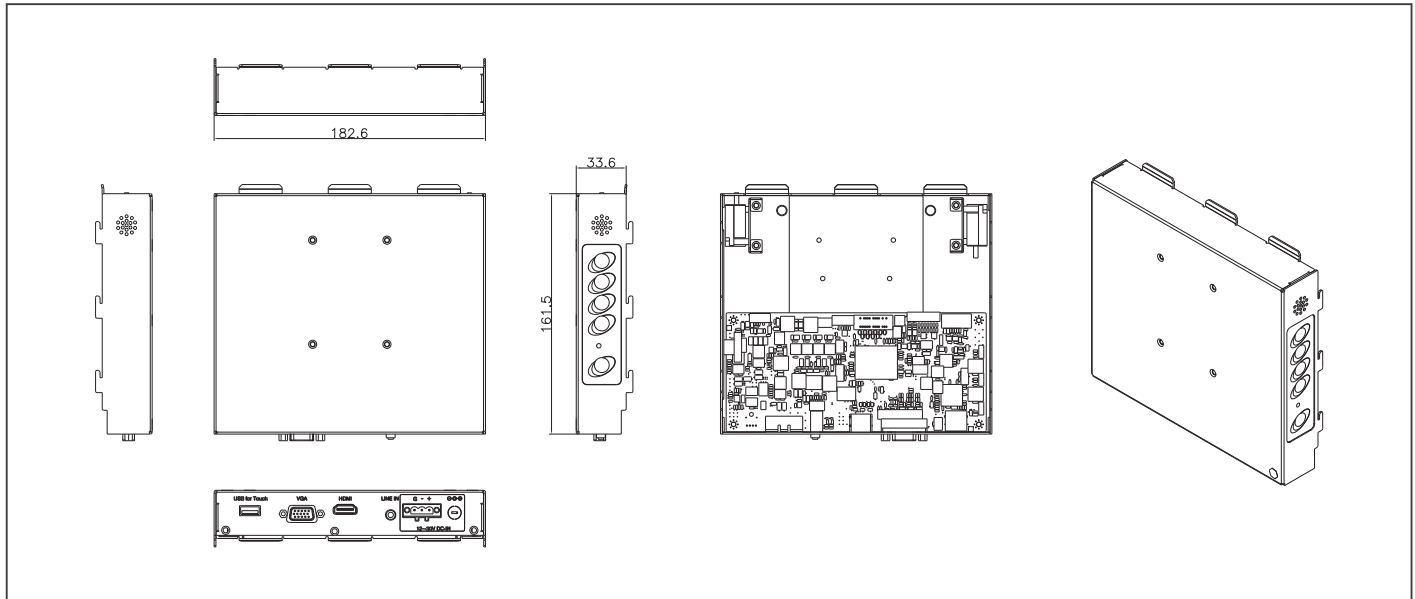


Specifications

SYSTEM	
Input Signal	VGA / HDMI
On Screen Display Control	5 keys OSD keypad (Up, Down, Menu, Auto, Power)
I/O Port	DB9 VGA x 1 HDMI x 1 USB x 1 (For Enable T/S Function) Line in x 1 (For optional internal Speaker) Power Input x 1(Default Terminal Block 3pin)
OS Support	Windows® 7 32/64 bit, Windows® 8 32/64 bit, Windows® 10 64 bit, Linux Ubuntu 16.04
Mechanical	
Construction	Metal chassis
Mounting	Must be assembled with "OMNI-Series Modules-Panels"
Dimension	5.1" x 6.4" x 1.2" (128.6mm x 161.5mm x 30.7mm)
Carton Dimension	12.3" x 10.1" x 7.6" (312mm x 257mm x 194mm)
Gross Weight	5.5 lb (2.5 kg)
Net Weight	2.6 lb (1.2 kg)
Environmental	
Operating Temperature	14°F ~ 131°F (-10°C ~ 55°C) With 0.5m/s Airflow
Storage Temperature	-4°F ~ 140°F (-20°C ~ 60°C)
Storage Humidity	10%~90% @104°F (40°C); non-condensing
Vibration	1 Grms / 5~500Hz/random Operation
Shock	—
EMC	CE/FCC, Class A
Power Supply	
DC Input	DC 12~30V Power Input with 3 Pin Terminal Block
LCD	
Display Type	Depends on your OMNI Panel Modules
Max. Resolution	
Max. Colors	
Luminance	
Viewing Angle	
Back Light	
Back Light MTBF (Hours)	
Touchscreen	
Type	
Light Transmission	Depends on your OMNI Panel Modules
Life Time	

Dimension

Unit: mm



Ordering Information

Part Number	Display Type	Max. Resolution	Luminance	View Angle	Backlight MTBF (Hours)	Display	Mounting	Power	Temp.	Touch	Other
OMNI-ADB-KIT-A1-1010	—	—	—	—	—	VGA x 1 HDMI x 1	Mount with OMNI Panel Modules	DC 12V~30V	14°F ~ 131°F (-10°C ~ 55°C) (with 0.5 m/s airflow)	—	—

Packing List

- OMNI Display BOX Kit x 1
- VGA Cable x 1
- USB Cable for Touch x 1
- Touch Driver CD x 1
- Phoenix Power Connector

Optional Accessories

- **1255300402**
(TF) Adapter, AC/DC, input AC, 90~264, output DC, 12V, 3.3A, 40W, 3p phoenix, FSP, FSP040-RHAN2/9NA0404929
- **1702031802**
Power Cord (US Type)
- **1702031803**
Power Cord (European Type)
- **170203180E**
Power Cord (Japanese Type)