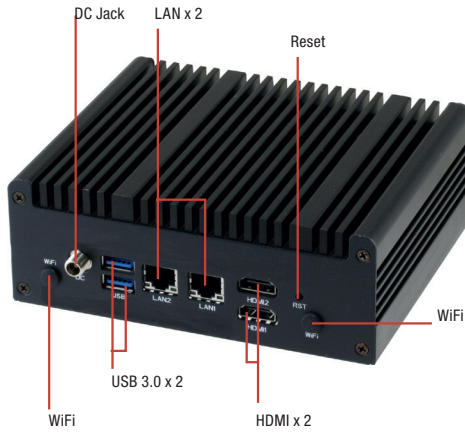
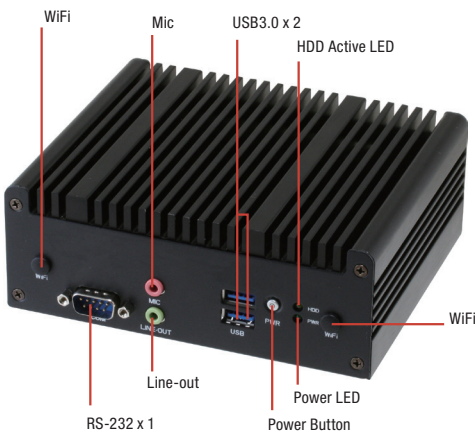


Mini PC with 6th Generation Intel® Core™ i7/i5/i3/Celeron 15W Processor, 2 HDMI, 2 LAN Ports, COM Port and 4 USB Ports

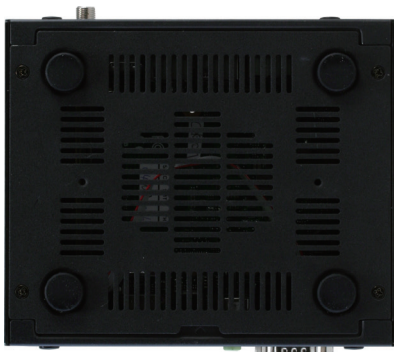
Front View



Rear View



Bottom View



Features

- 6th Generation Intel® 14nm ULT Core™ i7/i5/i3/Celeron® 15W BGA Processor
- Dual Gigabit Ethernet
- Dual HDMI Ports
- USB 3.0 Port x 4

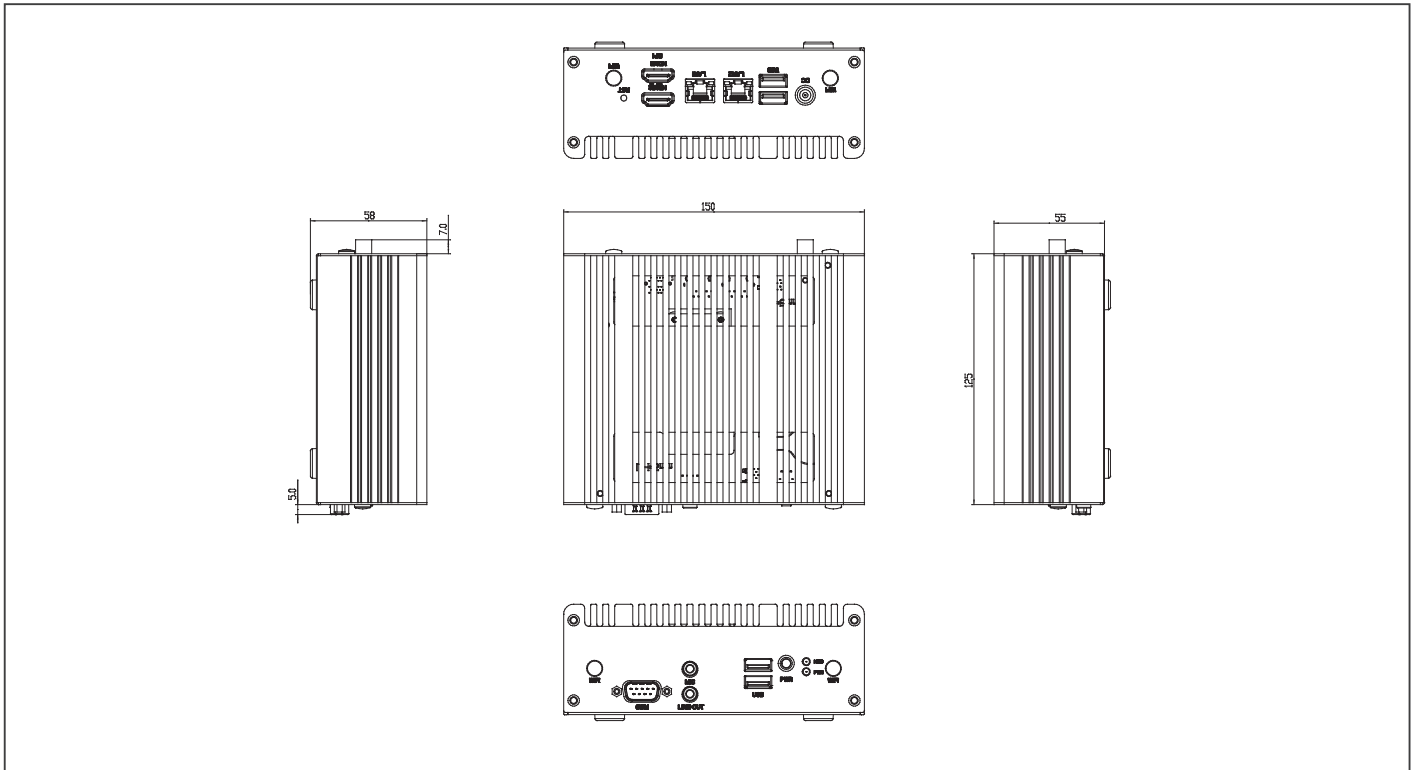


Specifications

System	
CPU	6th gen. Intel® 14nm ULT Core™, BGA CPU, 15W TDP. i7-6600U 2C/4T GT2 2.6/3.4 GHz 4M/ i5-6300U 2C/4T GT2 2.4/3.0 GHz 3M/ i3-6100U 2C/4T GT2 2.3 GHz 3M/ Celeron® 3955U 2C/2T GT1 (f) 2.0 GHz 2M
Chipset	Integrated into SoC
System Memory	SODIMM x 2, max. 32 GB, DDR4 2133/1867 MHz non-ECC, un-buffered memory
I/O Chipset	NCT5538D
Storage Devices	M.2 2280 M-Key slot (PCIe[x4] + SATA) x 1
Ethernet	Realtek® 8111G 10/100/1000Mb LAN x 2, RJ-45 x 2
Audio	Realtek® ALC887
TPM	—
Expansion Slots	M.2 2230 E-Key slot (PCIe+USB) x 1
BIOS	128M bit Flash ROM, AMI BIOS
H/W Monitor	Temperature Monitor on CPU/System, Voltage Monitor on Vcore/5V/3.3V/12V, Fan Monitor on Chassis
WatchDog Timer	1~255 steps by software program
Smart Fan Control	Chassis Fan
Wake On LAN / PXE	Yes (WOL / PXE)
Power State	S3, S4, S5
Graphics	
Graphics Chipset	Integrated Graphics
Resolution	HDMI 1.4 up to 4096 x 2160@24Hz
Brightness Control	—
Graphics Multi Display	HDMI + HDMI
Environment & Power & ME	
Battery	Lithium battery
Power Requirement	DC Power x 1 (DC: 12V~19V, wide rage:12V-5%~ 19V+10%)
Operating Temperature	FAN: 0°C ~ 50°C
Operating Humidity	20%~90%RH, non-condensing
Certificate	CE & FCC class A
Form Factor	NANO ITX: 4.72" x 4.72" (120mm x 120mm)
Weight	—
Front I/O	
USB	USB 3.0 port x 2
Audio	Audio Jack x 2 : Line-out (green), Mic-in (pink)
Serial port	COM port RS-232
Power	On/Off Button x 1
Others	Power LED x 1 + HD LED
Rear I/O	
USB	USB 3.0 port x 2
Display I/O	HDMI Connector x 2
LAN I/O	RJ-45 Connector x 2
Others	Reset Button x 1, DC Power Jack x 1
Internal I/O	
Storage	M.2 2280 M-Key slot x 1
FAN	Chassis Fan connector x 1 (3-pin, p=2.00mm)
Others	Reset Switch 2-pin header x 1, power button 2-pin header x 1, M.2 2230 E-Key slot x 1
Operating System	
OS	Windows® 7 32 bit, Windows® 7 64 bit, Windows® 8.1 64 bit, Windows® 10 64 bit, Linux Fedora* 22 (64b)

Dimension

Unit: mm



Ordering Information

Part Number	CPU	RAM Module	Display	Cooler	Storage	LAN	USB	Serial Port	Expansion Slot	Power	Mounting
NANO-002F-3955-01	Celeron® 3955U 2.0G/2M	—	HDMI x 2	Fan	—	GbE x 2	USB3.0 Port x 4	RS-232 Port x 1	M.2 2280 x 1	DC12-19V	VESA mount
NANO-002F-6100-01	I3-6100U 2.3G/3M	—	HDMI x 2	Fan	—	GbE x 2	USB3.0 Port x 4	RS-232 Port x 1	M.2 2280 x 1	DC12-19V	VESA mount
NANO-002F-6300-01	I5-6300U 2.4G/3M	—	HDMI x 2	Fan	—	GbE x 2	USB3.0 Port x 4	RS-232 Port x 1	M.2 2280 x 1	DC12-19V	VESA mount
NANO-002F-6600-01	I7-6600U 2.6G/4M	—	HDMI x 2	Fan	—	GbE x 2	USB3.0 Port x 4	RS-232 Port x 1	M.2 2280 x 1	DC12-19V	VESA mount

Packing List

- VESA Mount Kit
- Product DVD
- NANO-002F

Optional Accessories

- **1702031802**
Power Cord (US & Taiwan Type)
- **1702031803**
Power Cord (European Type)
- **170203180B**
Power Cord (China Type)
- **170203180E**
Power Cord (Japanese Type)
- **1255300607**
60W Power Adapter
- **968C064G2X**
M.2 2280 64GB SSD
- **968C128G1G**
M.2 2280 128GB SSD