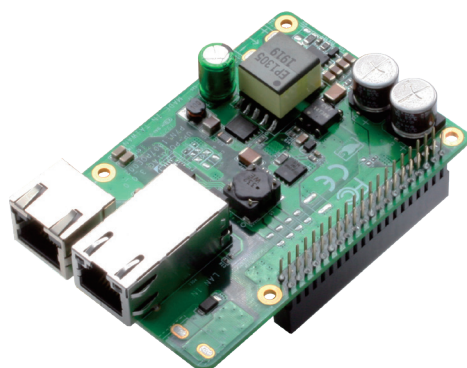
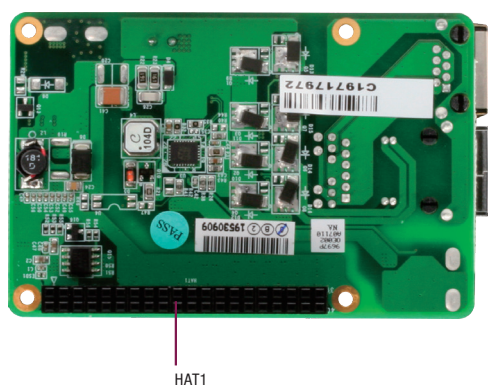
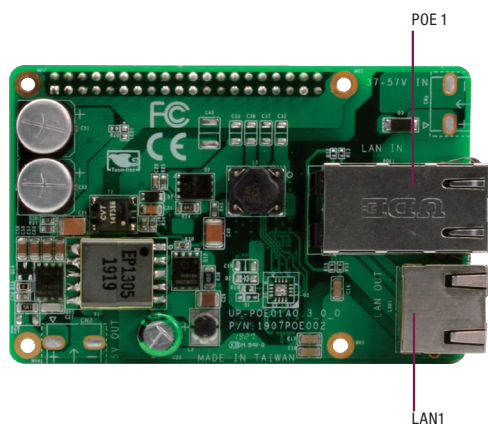


PoE Ideal Diode Bridge & PD Forward/Flyback Controller



Features

- IEEE802.3 AT Standard
- Max 25W Power Supply
- 10/100/1000 Mbps LAN
- RJ45 Input x 1
- RJ45 Output x 1



Specifications

System	
IC	LT4321I (PoE Ideal Diode Bridge Controller) x 1 LT4276B (PD Forward / Flyback Controller) x 1
I/O Placements	
External Ports	RJ45 input x 1 RJ45 output x 1
Internal connector	HAT 40 GPIO male (5V, GND) x 1
Others	
Form Factor	85.6mm x 56.5mm x 25mm
Certification	CE / FCC Class A
Operating Temperature	0°C ~ 60°C
OS Support	No OS limitation

Packing List

- UP-POE
- LAN cable

Ordering Information

Part Number	Description
UP-POE-A20-0001	POE board