

# EPIC-CFS7

**Preliminary**

EPIC Board with 8th Generation Intel® Core™ i-S series Processor (Socket Type)



## Features

- 8th Generation Intel® Core™ i-S series Processor (Socket Type)
- 12V, DDR4 (Non-ECC) SODIMM x 2, 2666MHz, up to 32 GB
- HDMI1 / HDMI2 Display
- SATA III x 1
- USB 3.1/USB2.0 x 4 (Rear I/O), USB 2.0 x2 (Internal), RS-232/422/485 x 2
- mSATA/Mini-PCIe x 1 (Full size) (H310: By BOM change, Q370: By BIOS Change for mPCIe)
- 12V, AT/ATX Mode (Default : AT Mode)

Operating Humidity	0% ~ 90% relative humidity, non-condensing
MTBF (Hours)	TBD
Certification	CE/FCC
<b>Display</b>	
Controller	8 <sup>th</sup> Generation Intel® Core i3/i5/i7/ Celeron®
Video Output	1. HDMI1 x 1 2. HDMI2 x 1
<b>I/O</b>	
Ethernet	Intel® GbE Ethernet I211 x 2
Audio	None
USB Port	USB 3.1/ USB2.0 x 4 (Rear I/O) USB 2.0 x 2 (Internal header)
Serial Port	COM x 2 (Internal header) ,RS-232/422/485
HDD Interface	SATA 3.0 x 1
SSD	mSATA / Mini-PCIe (Full size) x 1 H310: By BOM change for mPCIe Q370: By BIOS Change for mPCIe
Expansion Slot	PCIe[x4] slot*1 (FPC Type) -PCIe[x1] x 2 only for H310 -PCIe[x4] x 1 for Q370
DIO	None

## Specifications

System	
Form Factor	4" EPIC Board
CPU	8 <sup>th</sup> Generation CPU Socket Type (Support up to 65W SKU)
CPU Frequency	8 <sup>th</sup> Generation Intel® Core i3/i5/i7/ Celeron® Up to 3.60 GHz
Chipset	H310 / Q370 (6W)
Memory Type	DDR4 (Non-ECC) SODIMM x 2, 2666MHz, up to 32 GB
BIOS	AMI
Wake On LAN	Yes
Watchdog Timer	255 Levels
Power Requirement	12V only
Power Supply Type	AT (Default) / ATX
Power Consumption	TBD
Dimension	4.53" x 6.50" (115mm x 165mm)
Operating Temperature	32°F ~ 140°F (0°C ~ 60°C)
Storage Temperature	-40°F ~ 176°F (-40°C ~ 80°C)

**Packing List**

**EPIC-CFS7**

**Jumper Cap (965766600)**

**SATA Power Cable, Length 15cm (1702150155)**

**SATA Cable, Length 50cm (1709070500)**

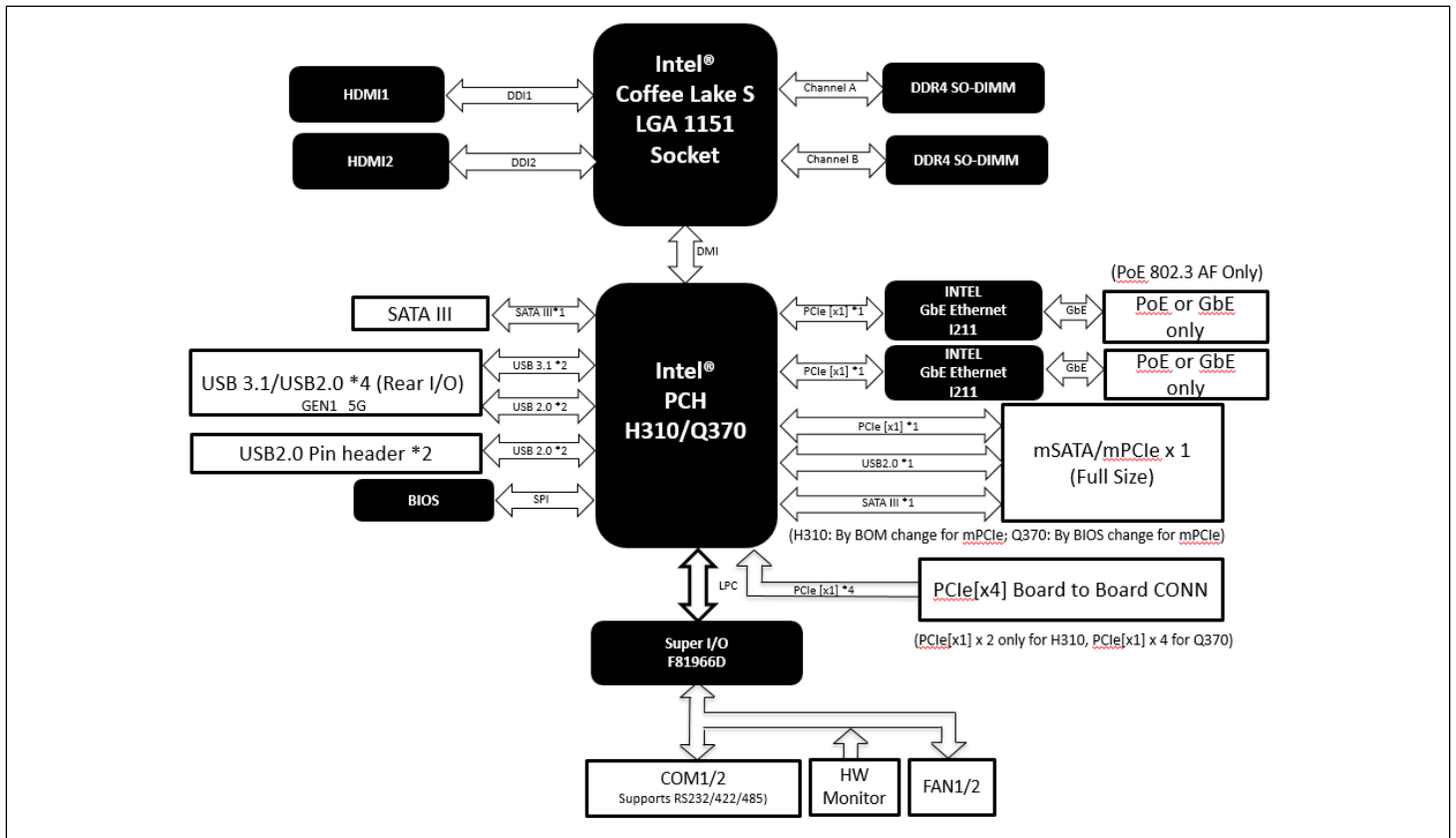
**Optional accessory**

Part Number	Description	QTY
EPIC-CFS7 -FAN01	TBD	1
1701090150	COM Cable (9pin), Length 15cm	2
170010010D	USB Cable (5pin), Length 10cm	1
1702002010	Power Cable (2pin), Length 10cm	1

**Ordering Information**

Part Number	CPU	Memory	Thermal	Display	Storage	LAN	USB 3.1 (GE I/O)
EPIC-CFS7-A10-0001 (H310)	Intel® Coffee Lake S LGA 1151 Socket	DDR4 SO-DIMM x 2 (up to 32 GB)	FAN	HDMI1 HDMI2	SATA 3.0 x 1	GbE x 2 (option for PoE 802.3AF)	USB 3.1 (GE I/O) x 2
EPIC-CFS7-A10-0002 (Q370)	Intel® Coffee Lake S LGA 1151 Socket	DDR4 SO-DIMM x 2 (up to 32 GB)	FAN	HDMI1 HDMI2	SATA 3.0 x 1	GbE x 2 (option for PoE 802.3AF)	USB 3.1 (GE I/O) x 2

**Block Diagram**



**Dimension**

