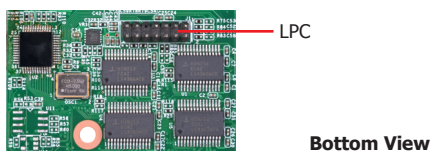
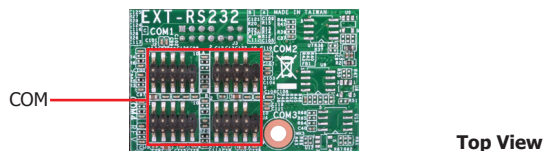
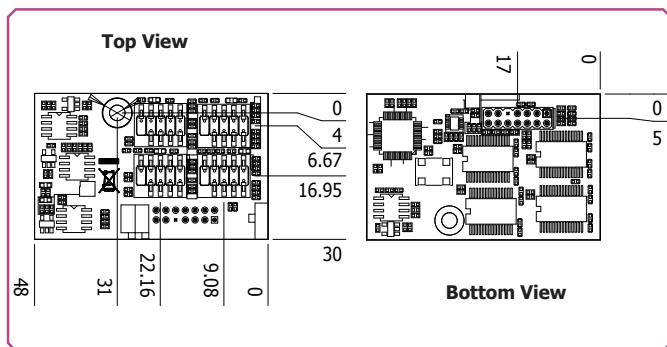


EXT-RS232



Mechanical Drawing



Features

| | |
|------------|-----------------------------|
| CHIP | NCT5104 |
| PORT | 4 COM (RS232) |
| INTERFACE | LPC |
| DIMENSIONS | 48mm x 30mm (1.89" x 1.18") |

Specifications

CHIP

- Main IC: NCT5104

I/O CONNECTORS

- 1 LPC connector
- 4 connectors for 4 external RS232 serial ports (2.0mm pitch)

POWER INPUT

- 3.3V/5V/5VSB via LPC connector

APPLIED MODELS

- SD631-C236/Q170, SD630-H110, SD331-C236/Q170, SD331-Q170/H110, SD101/SD103-Q170/H110, SD100-Q170/H110, SU171/SU173, BW171/BW173

TEMPERATURE

- Operating: 0°C to 60°C
- Storage: -40°C to 85°C

HUMIDITY

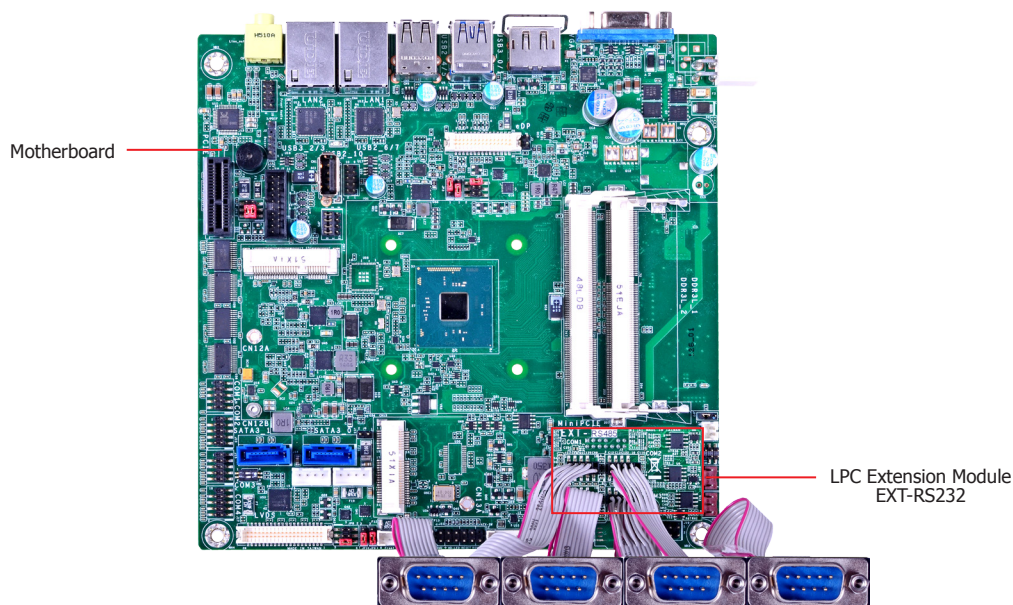
- 5% to 90%

DIMENSIONS

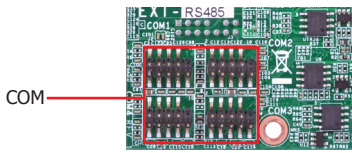
- 48mm x 30mm (1.89" x 1.18")

Packing List

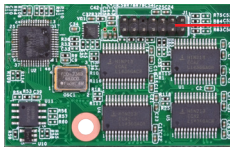
| | |
|------------------------------------|-----------------|
| • 1 EXT-RS232 module | |
| • 4 COM port cable (Length: 250mm) | A81-017001-001G |



EXT-RS485

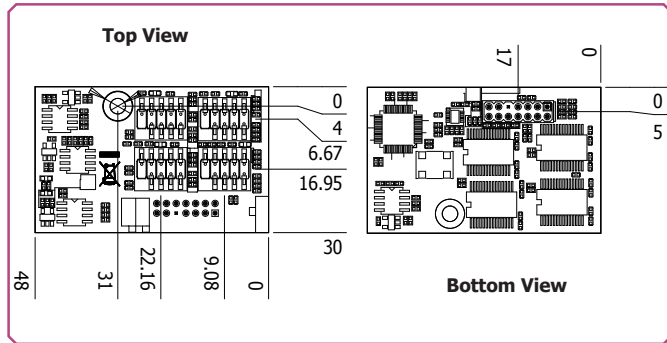


Top View



Bottom View

Mechanical Drawing



Features

| | |
|------------|-----------------------------|
| CHIP | NCT5104 |
| PORT | 4 COM (RS485) |
| INTERFACE | LPC |
| DIMENSIONS | 48mm x 30mm (1.89" x 1.18") |

Specifications

CHIP

- Main IC: NCT5104

I/O CONNECTORS

- 1 LPC connector
- 4 connectors for 4 external RS485 serial ports (2.0mm pitch)

POWER INPUT

- 3.3V/5V/5VSB via LPC connector

APPLIED MODELS

- SD631-C236/Q170, SD630-H110, SD331-C236/Q170, SD331-Q170/H110, SD101/SD103-Q170/H110, SD100-Q170/H110, SU171/SU173, BW171/BW173

TEMPERATURE

- Operating: 0°C to 60°C
- Storage: -40°C to 85°C

HUMIDITY

- 5% to 90%

DIMENSIONS

- 48mm x 30mm (1.89" x 1.18")

Packing List

| | |
|------------------------------------|-----------------|
| • 1 EXT-RS485 module | |
| • 4 COM port cable (Length: 250mm) | A81-017001-001G |

